

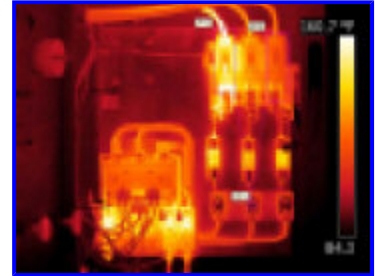
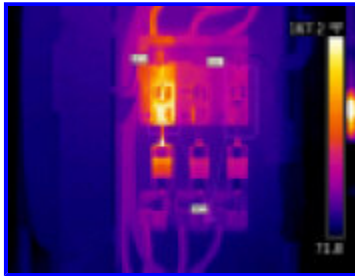
The Association for Facilities Engineering



Meeting: Pump Reliability and Maintenance

We would like to invite ALL Engineers, as well as Maintenance Managers, and Building Energy Directors to our next A.F.E. meeting, March 06, 2008 beginning at 5:30 P.M.

Meeting Location: BRI, Inc. 240 C Sovereign Court Ballwin, MO 63011-4415, telephone (636)-227-2535.



5:30 to 5:45 sign up,

5:45 to 6:30 Eat Meal will be provided by **McAlister's Deli** of Ballwin,

6:30 to 6:50 **Dynamic Balancing** presented by John Meyers Level 3 **Vibration Analyst** of BRI-INC,

6:50 to 7:20 **Remote Reliability** on BRI demo Trailer Presented by Brian Carsell BRI-INC remote reliability sales.,

7:20 to 7:50 **Infrared Inspections** presented by Chris Troutt BRI-INC Level 2 **Infrared Thermographer**,

7:50 to 8:15 BRI Partner introductions Dave Doerhoff **FLIR Systems** and ??? ENERCO Elec, and Closing.

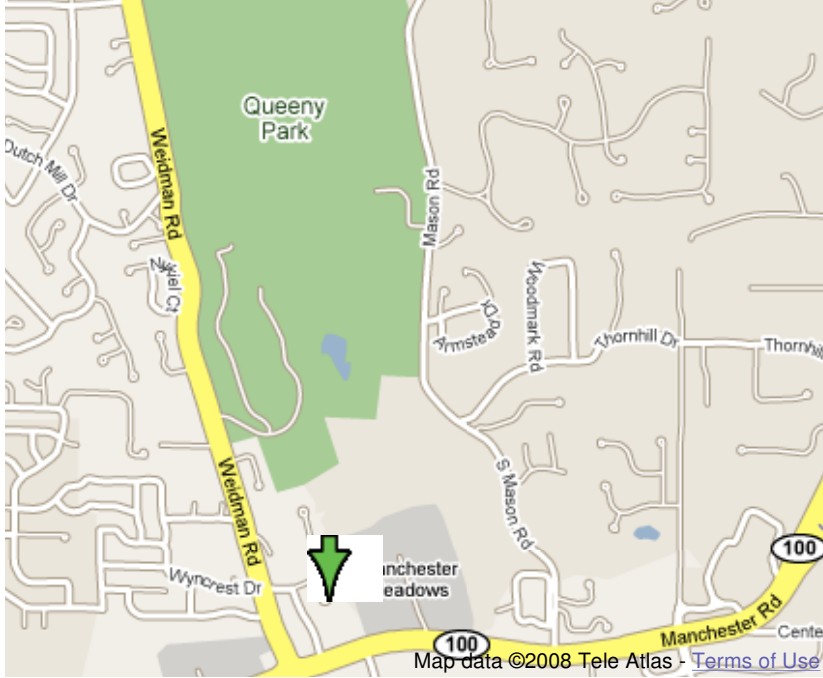
Come and network with your St. Louis 's A.F.E. End- User's in manufacturing and building operations, this is a place where your questions can be answered by all of us working together. *(Do your friends a favor and introduce them to the fastest growing organization in the St. Louis area!!)*

Please RSVP us below or call (636)-227-2535 ... This will reserve a seat for you.

Deadline to register is Friday, February 29, 2008

Go online to RSVP <http://www.afestlouis.org/IR-Reliability.htm>

Please email **CTroutt @ bri-inc.com** if you have any questions.



[View Larger Map](#)

The Association for Facilities Engineering (AFE) is the largest, dedicated network in the facility, maintenance, and plant operations professions. Our members advance the field and their careers using the most complete range of technical information, education, best practices, and sharing of common professional experiences.