



April's Newsletter

[AFE-STL](#)
[Get Involved](#)
[On-Line](#)
[Spot Light](#)
[New This Month](#)
[Fire and Security](#)
[Our Next Meeting](#)
[Student Chapter](#)
[News Bits](#)
[AFE National News](#)

Spot Light:



Facilities Engineering Journal

(free to members)

Simply the best technical journal in the field. This Journal provides you with practical, in-depth information on the key issues you face on the job every day. Topics such as environmental, power, HVAC, maintenance, management, safety, compliance and professional development are addressed by experts in the field each issue.

[Subscribe Today!](#)

[Complimentary on-line issue - click here](#)

Newsletter format and content via your AFE-StLouis.org web site!

By requesting to be on our newsletter mail list, you will receive by email, an attached PDF file. [Or](#)

AFE St. Louis

The one year anniversary of the AFE St. Louis Newsletter !

- Thanks to all those who helped -

Hi all, this is your newsletter editor in chief, Don Fitchett. :>) Time flies when your having fun, and I find it hard to believe I have pumped out 12 of these newsletters. :>)

In this newsletter and other places on our website, we ask that you show your patronage to those who have supported our organization and our chapter. Since I have been the author of this website/newsletter and my company has paid for all the associated cost this year...

Business Industrial Network

We exist because of the continued support of our Sponsors. When you have needs, please show your appreciation by contacting them.

I look forward to welcoming and working with the new sponsors of this web site for this upcoming year.

Need Help or Advice?

Please check out our new discussion area "[Chuck's Corner](#)".

Also recommended by a member...

[HeatingHelp.com](#)

Please visit our online version of this newsletter at ...

<http://www.afestlouis.org/Newsletter/>

I realized speaking with guest at the meeting, several visitors to our site may not find all the valuable tools located here.

for help ...

Help finding [a job](#)

Help finding [an expert](#)

Help finding [a resource](#)

[right click here to download now.](#)

Name:

Email:

This Month:



Chuck's Corner

Our Members Forum:

Chuck Mueller

(CPMM/CPE), is AFE St. Louis Chapter Treasurer and your host in this forum. "We wanted to do our discussion forum a little different than the others you may find on the internet. This is a Members Only, online tool to get your questions answered without getting on a mail list or having to wait weeks for your reply. [Please submit a question](#), and myself and other members will give you an answer.

To make this work, we ask that all members take part in this forum, by responding to the emailed questions as soon as possible. With a little humor and the collective knowledge of our chapter, we all will grow and have fun doing it. **Thanks Chuck**

This is a call for job leads to help one of our own members. We can show our members and the community we are there for them, in their time of need.

Let's add yet another AFE success story to our legacy. We have beefed up our [career resource area](#) in an effort to help. **Please email any St. Louis Facility Engineering job leads to webmaster@AFESTLouis.org**

Help [getting trained](#)

Help [getting certified](#)

Help with [your calculations](#)

Help with [your maintenance needs](#)

Help with [homeland security](#)

More help with files from [our download area](#) or [search our site](#)

Call For Help

Vendors, you can support your local St. Louis Chapter, and reap great rewards by advertising on this site. [click here](#). We are also constantly adding fun and valuable resources to AFESTLouis.org, so please [check back](#) on the website often. Feedback on the site and the Newsletter would be very much appreciated.

Click the "[Comments](#)" button on the left. (or email webmaster@AFESTLouis.org)

Thanks

Get Involved

In your St. Louis Chapter

Learn, Lead, and Influence

Frank (our Chapter President), returns from the AFE Regional meeting with ...

Exciting news- that our St. Louis chapter 26 is the fastest growing chapter in region 9. Our regional director believes that our success has stemmed from our three goals, we have to have fun, be educational, and network.

Also -with three key areas that we are going to focus development on.

1. Youth education. We are going to reach out to the area trade schools in the St. Louis area and extend our monthly educational meetings to them. This will be a great opportunity for a youth to see the various types of systems and trades that are available to them.

2. Membership development. To developing a program to maximize our education. This program is designed to develop each member with the latest technology and systems available to date. We will

The steering committee have a great year planned for us, as well as some tentative plans for all of 2002!

Our chapter has responded to our members request for knowledge by an array of monthly meetings focused on their choice topic. ("Protection of our Buildings and the people in them.")

With this months meeting being the final piece to the puzzle, we will focus upcoming meetings on the next most requested topic. (cost-effective manufacturing)

([see online calendar](#))

- [The people behind AFE St. Louis Chapter](#)
- [Read about new tours and meeting with pictures.](#)

We also encourage you to follow up the print version of this newsletter, with a visit to the online version for more details.

www.AFESTLouis.org

St. Louis Meeting / Tour :



End User's in the St. Louis Area

[C&R Mechanical Company](#) will be hosting our meeting on "Protecting Buildings and Their Occupants From Airborne Hazards".

C & R will also be provide food and drink for this event. This event will be Tuesday (April 23, 2002 @ 5:30 P.M.) in their facility located at 12825 Pennridge Drive, Bridgeton, MO. 63044 Please [click here](#) to learn more.

Our group is growing so don't miss out. Members: Don't forget your [badges!](#)

Come and network with your peers!

pool from our most qualified venders in the St. Louis area.

3. New Membership. To reach out to the future leaders of the St. Louis area and share our exciting organization with others. This is where end users can have a great education on the latest technology , network with the most knowledgeable people in St. Louis, and have a great time doing it.

Frank goes on to say ...

Now that's a beautiful thing. Anyone can have all of this for about \$15.00 dollar a month.

I am proud to say that we have the best regional leadership in AFE. This is a powerful tool using our national organization to network with others. This is why I am so excited with this type of education I will be able to lower cost for my employer.



Thru involvement you can fully experience AFE's resources to help you learn, lead, and influence. We have a lot of fun and educational events planned. Please [take part](#) in the planning and other activities. We challenge all our St. Louis Chapter members to [get involved](#), and see how AFE improves your life.

One of our own local St. Louis members is showing support and getting involved by being a speaker at FA2002! Please show your support by making plans to attend this educational event.



AFE has a Relief Fund for those Facility personnel who fell victim to the 9-11 attack. Let's set a goal for our chapter to raise at least one thousand dollars. Please forward us any creative ideas or donations. Thanks

[Please click here to learn more.](#)

[Click here to see how we are personally delivering your donations to the victims.](#)

News Bits: News from over 2000 sources updated every minute. Click refresh button on your browser to see latest Facilities News!

Facilities Engineering World News

[Board quizzed about status of facilities project...](#)

[Decorah Public Opinion](#) Thu Apr 11 19:55:00 CDT 2002

[Prison numbers a tale of two systems Federal lockups swell even as state facilities fill up more slowly...](#)

[San Francisco Chronicle](#) Thu Apr 11 15:29:00 CDT 2002

[NIPSCO ordered to keep facilities open...](#)

[Michigan City News-Dispatch](#) Thu Apr 11 13:13:00 CDT 2002

[Educators want second vote on facilities...](#)

[Millbrook Round table](#) Thu Apr 11 11:24:00 CDT 2002

[Australian Government to close some immigration detention facilities...](#)

[ABC Rural Online News](#) Thu Apr 11 09:46:00 CDT 2002

St. Louis Meeting:



SimplexGrinnell on Fire and Security

We want to thank the great folks at **SimplexGrinnell**, for hosting our meeting, providing the dinner and great door prizes! For those who could not make it, you can read about this educational event in this news letter and online.

[\(Click to read about and view pictures\)](#)

We exist because of the continued support of our Sponsors. Chapter 26 thanks ALL of them for their continued support!

Student Chapter:

Please help our members at Southern Illinois University, by contacting [Dr. Sporre](#) at SIU, to see what you can do to support our new student chapter.

These students are our future; let's invest a little time in our future.

AFE National:

Members: For details, please contact your chapter or regional officers.

[Please visit our National site for More National News](#)



AFE-St. Louis's February Meeting with SimplexGrinnell

St. Louis Chapter 26 would like to express a special Thank You to
 Kevin White - **SimplexGrinnell**
 Wally Rosenkranz - **SimplexGrinnell**
 Scott Vogel - **Phillips**

along with all the great folks at **SimplexGrinnell**, for hosting our meeting, providing the dinner and great door prizes!

Thanks to all those members who showed their support by attending. We look forward to seeing you again at next month's meeting. To all our guests, we hope you found this event interesting. This is just one of the many benefits of belonging to our organization. We will enjoy seeing you at the next meeting. We hope that you all join the Association for Facilities Engineering.

Frank Kastl

President-AFE St. Louis (Chapter 26)

The Meeting:



effectively.

We all started out networking while enjoying the great food and drink provided by our host, **SimplexGrinnell**. Then it was off to the meeting room which had an array of fire and security equipment set up for the demonstration. This is where we learned the valuable benefits of a completely integrated fire, security, and time clocks from over a 100 years of their experience. This meeting was a great follow up to our meeting with the FBI. As we learned the importance of hardening your target against malicious acts, and this month we learned exactly how to do that cost

Fire Systems

Kevin White of **SimplexGrinnell** started the presentation off with information about Fire and security. The system Kevin explained was the new Semplex® 4100U – Universal Fire Alarm Platform. This Fire system is designed similar to the PLCs of the manufacturing industry, being it is completely modular and expandable. It will integrate into your existing system allowing you to upgrade to the new system a floor at a time if that is what your budget demands.



Tip: If you initiate the contact with your fire marshal with a system upgrade plan, before he comes to you, the fire marshal will most likely be more cooperative.

Initially you may purchase just the control panel, having your existing system hardwired in. The next step would be to convert over a few floors or building at a time to the network. This upgrade method will give you the maximum protect by the new features of the 4100U including internet ready. The folks at **SimplexGrinnell** are constantly focused on serves rather than just try to sell a product. You choose the system capabilities you need and define the budget you are operating under, **SimplexGrinnell** will come up with a plan to get you there.



With the network addressable nodes of the 4100U, changes to your building layout are cost effective without the need for hardwiring. Also you will greater flexibility to meet the challenges of changing regulations. An example is the growing number of states requiring the ability to transmit unique warning messages depending on area of building and type of warning. The 4100U meets this challenge with standard ability to transmit multiple messages over the same copper wire.



Kevin led into the next half of the presentation which was on the security aspects of **SimplexGrinnell** equipment. Kevin gave some examples of how complete integration of fire and security will give you greater capabilities than separate stand alone systems. One example was using their easy to program windows software, you can quickly set a CCTV to zoom in on who trips the fire alarm (trigger method) as with ID cards (which the same software can print out) can trip the camera to pan and zoom in.

Security



The second part of the presentation was given by **Philips** representative, Scott Vogel. Scott gave us hands on demonstrations of the security equipment while teaching us the value and capabilities of a digital CCTV system. first Scott dispelled the misconception of the cost to convert over to a digital security system. **SimplexGrinnell** can start you out with a digital converter that conveniently fits where your old VCR was.

The obvious reason to switch over to a digital CCTV system is storage and quality. You can store a lot of CDs in the area a stack of VHS tapes used to be. ([click here for storage calculator](#)) They quality will eliminate the environmental conditions which are currently rendering VCR systems useless. Such as dark recording at night, VCRs not being serviced once a year, yielding a scratchy un-viewable video.

The greatest advantage of upgrading to digital CCTV system is capabilities. With the all the recording stored on the hard drive of a computer and **Philips** advanced software, you can search by date, time, or even event within seconds. You can set the digital software to record one camera only if there is motion in it's viewing area, this capability reduces the amount of hard drive storage space needed to store the video images.



Scott set up the demo with a soda can, using the video software to highlight just the soda can. We could move anywhere in the view of the camera and it would not record, until someone actually moved the soda can (video mask method) that was the search capability, to highlight the soda can and search through hours, days of recordings, until the software seen the can move from highlighted position.

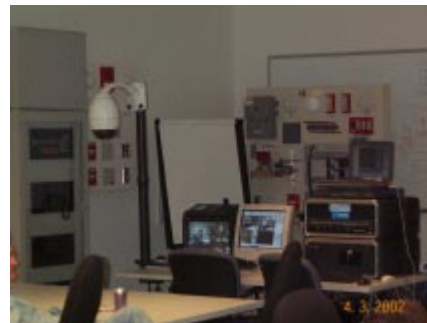
Another demonstration was using the digital system with digital cameras. Scott was able to adjust for dark settings in several ways. The cameras have iris and shutter speed control to take in more light, switching automatically from color video (for better identification during daylight), to black and white (for better identification during night).

A reminder of what we learned last month meeting with the FBI:

“Cameras and backups are also a great place to start. Cameras work in all three of the counter terrorism measures. Camera security makes for a hard target, more likely successful prosecution, and reference for future preparation. Backup your videos and your computers.”

There are many applications for **SimplexGrinnell** systems in the manufacturing industry too. One example given is to use the trigger method of interface with a barcode reader. If the barcode system fails to read the barcode, the video monitor would zoom in on the bar code number. This will allow the operator to manually read and enter the bar code number into the system, thus saving valuable production time.

SimplexGrinnell brings fire, security and time all together as an intelligent integrated system with options like automatic calling/paging and Internet, LAN and WAN capabilities. After the presentations, we had drawings for the many door prizes **SimplexGrinnell** provided. (It looked like every one received a prize, I picked a mag light, others picked golf items. :>) Thanks you so much **SimplexGrinnell** for the valuable information, food, drink, fun and prizes.



Thanks to those who attended, hope to see more of you in our engineering ranks at our next meeting.

Please see our *scrapbook* for more pictures.

For more information by SimplexGrinnell, please click on the links below...

- [***Major Trends in the Security Industry***](#)
- [***Finding the Value in Security System Integration***](#)
- [***Intelligent Fire Notification: A Breakthrough in the Fire Alarm Industry Lower Cost of Installation and Maintenance, Unobtrusive Compliance Testing, Better Diagnostics***](#)
- [***Assessing Your Fire Alarm System Needs***](#)

AFE Members: We exist because of the continued support of our Sponsors. When you have needs, please show your appreciation by contacting them.

<p>SimplexGrinnell 3787 Rider Trail South Earth city, Mo. 63045</p> <p>Tel: 314-739-4014 Fax: 314-739-3755 www.simplexgrinnell.com</p>



AFE The Association for Facilities Engineering,
Chapter 26 serving the greater St. Louis area.



We would like to invite ALL Engineers, as well as Maintenance Managers, and Building Energy Directors to our A.F.E. monthly meeting.

Subject: Protecting Buildings and Their Occupants From Airborne Hazards.

C&R Mechanical Company will be hosting our meeting on "Protecting Buildings and Their Occupants From Airborne Hazards". C& R will also be provide food and drink for this event. This event will be Tuesday (April 23, 2002 @ 5:30 P.M.) in their facility located at 12825 Pennridge Drive, Bridgeton, MO. 63044

Arnold Appel, Director of Health Care Planning for C&R will be the speaker. Come and network with your St. Louis's A.F.E. End user's in manufacturing and building operations, this is a place where your questions can be answered by all of us working together. (*Vendors: Please bring 2 of your end users, as guest!*)

Our group is growing so don't miss out. Members: Don't forget your badges!
Members Free ! - 1st time Guest Free! (all other guest 10\$ at the door)

Frank Kastl (AFE-St Louis President)

Please RSVP us below... This will reserve a seat for you.

Please print and fax this document to (314) 436-7391.

OR

Submit the RSVP form online at www.AFESTLouis.org/AprRSVP.htm

Please email webmaster@afestlouis.org if you have any questions.

The Association for Facilities Engineering (AFE) is the largest, dedicated network in the facility, maintenance, and plant operations professions. Our members advance the field and their careers using the most complete range of technical information, education, best practices, and sharing of common professional experiences.



WELCOME TO THE 2ND ANNUAL ST LOUIS AFE FALL CLASSIC



Please join us at Sunset Lakes Golf Club on September 24th (Last Tuesday of the Month) for an afternoon of FUN and fellowship. The day will include 18-holes of golf, cart, beverages for the afternoon (and evening), pork steak dinner, attendance prizes and some friendly course competitions. All for the extremely frugal price of

\$52 for Members

\$75 for Non-members

\$20, If you would like to just join us for dinner.

Please indicate the number of members and guest in your group, if multiple foursomes please fill-out one form per foursome. Individuals are welcome and will be joined up with other adventuresome souls.

	Members		Guest
1)	_____	_____	_____
2)	_____	_____	_____
3)	_____	_____	_____
4)	_____	_____	_____



**Make checks payable to: St. Louis-AFE and Mail to Chuck Mueller
C/O Missouri Athletic Club 405 Washington, St. Louis, MO 63102,
must be received by September 8, 2002.**

**Interested in being a corporate sponsor for our outing,
please contact Terry Bremer @ (314) 773-1111 ext. 261**